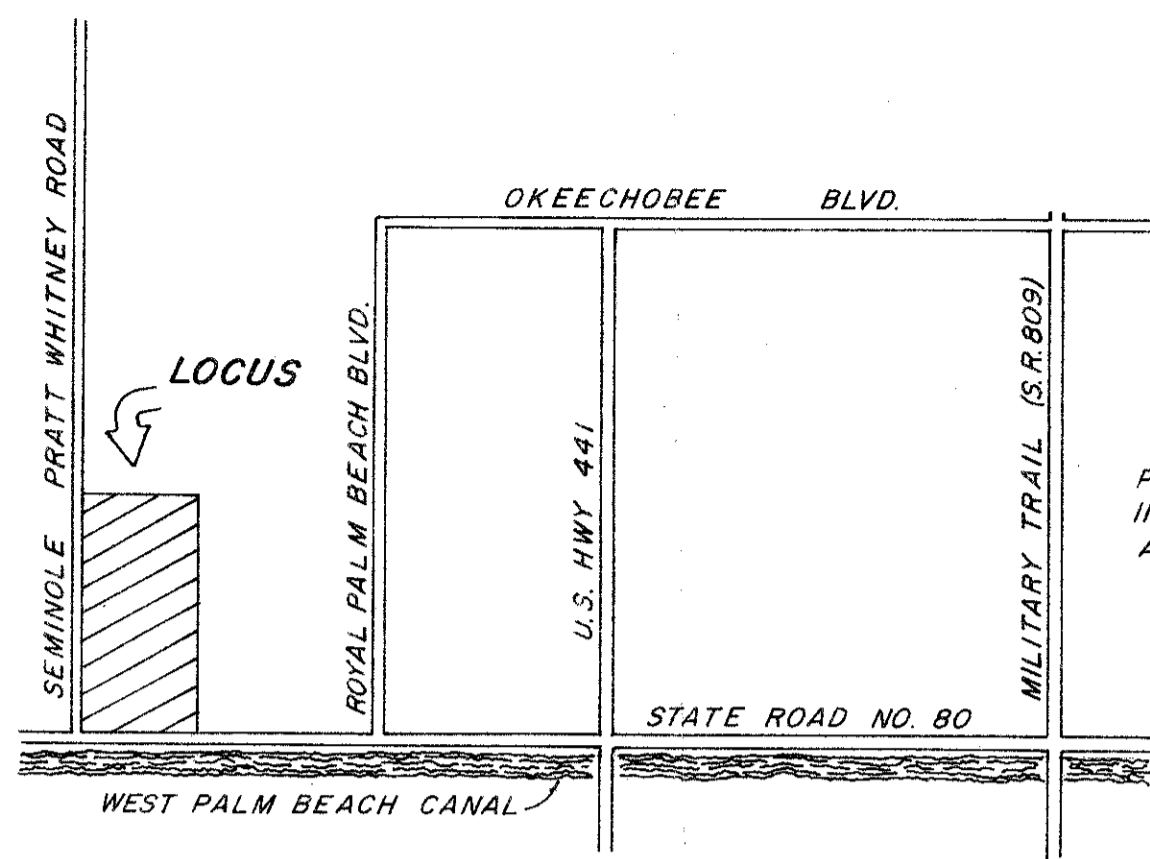


ENTRADA ACRES

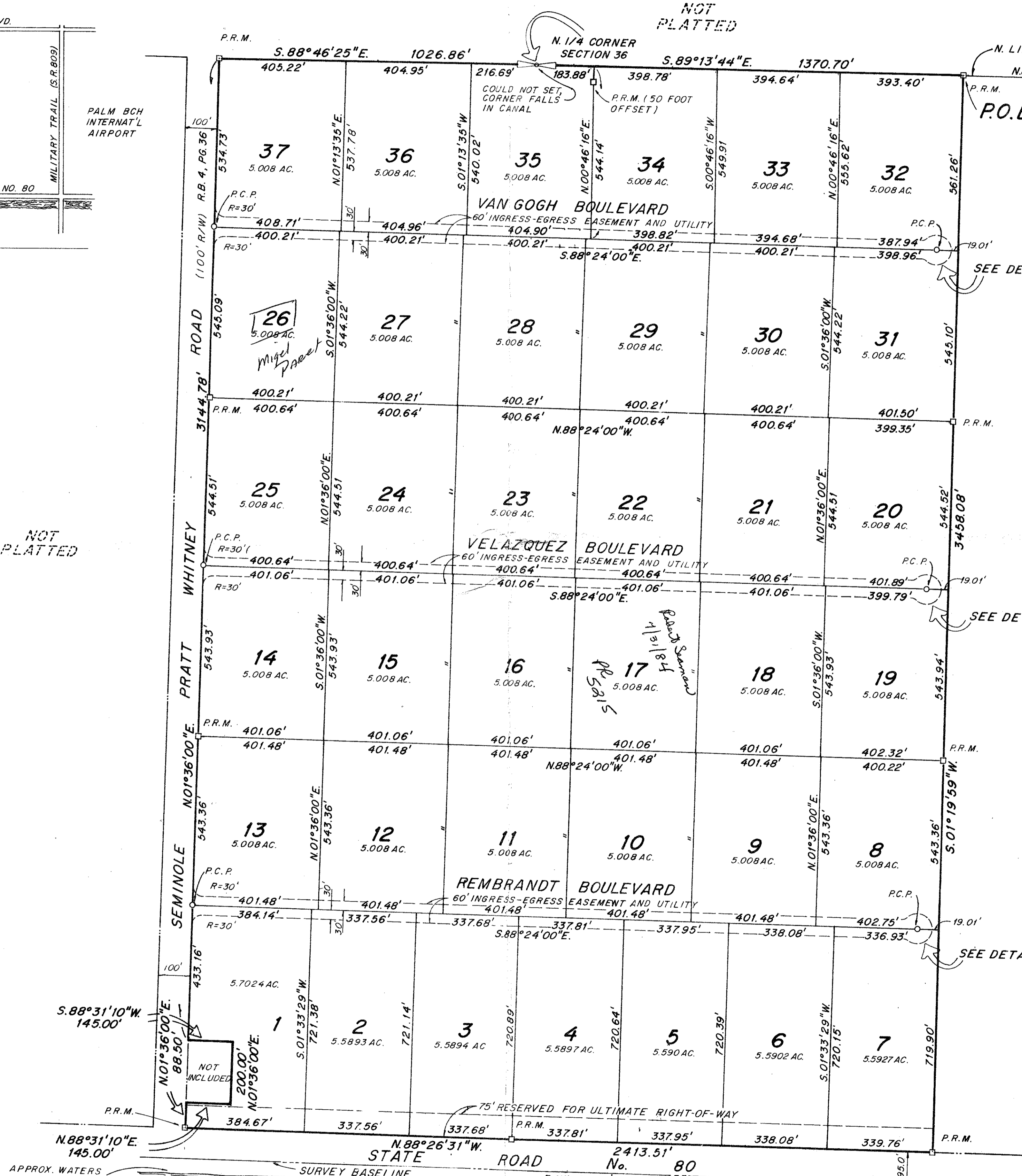
A RURAL SUBDIVISION
In Section 36, Township 43 South, Range 40 East
Palm Beach County, Florida

DECEMBER, 1977

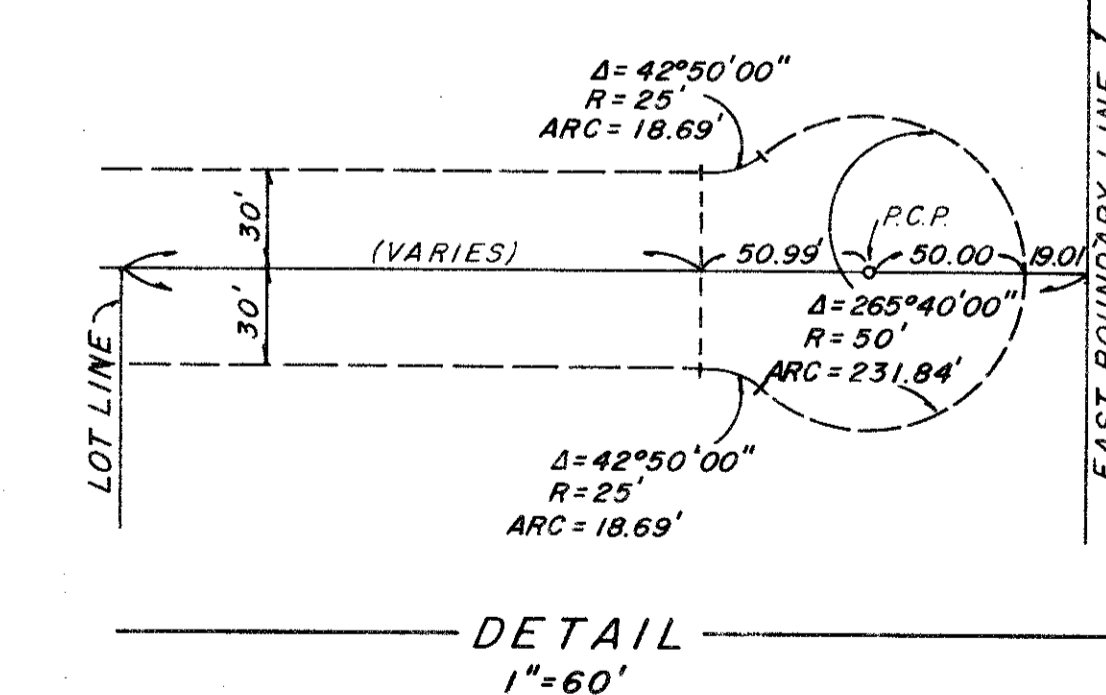
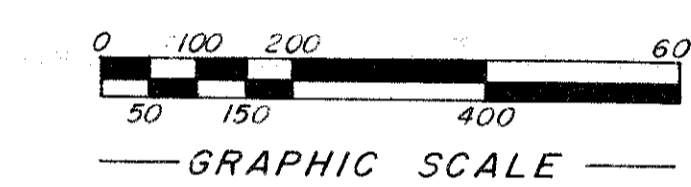
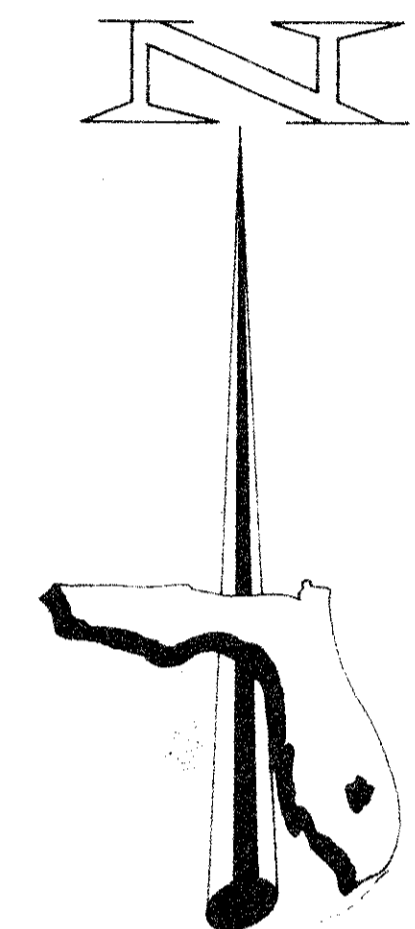
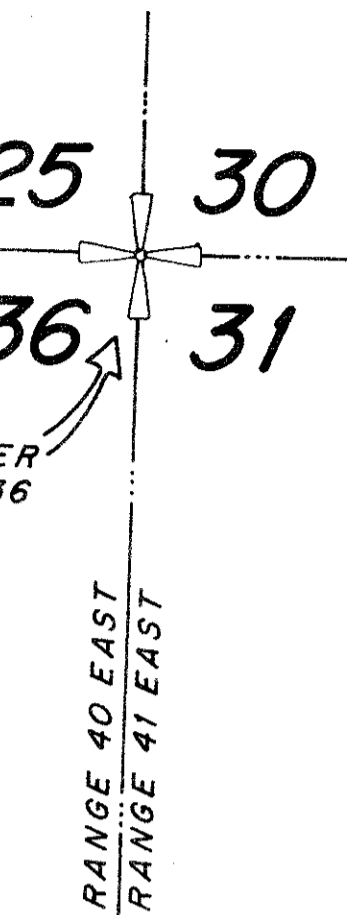


LOCATION MAP
N.T.S.

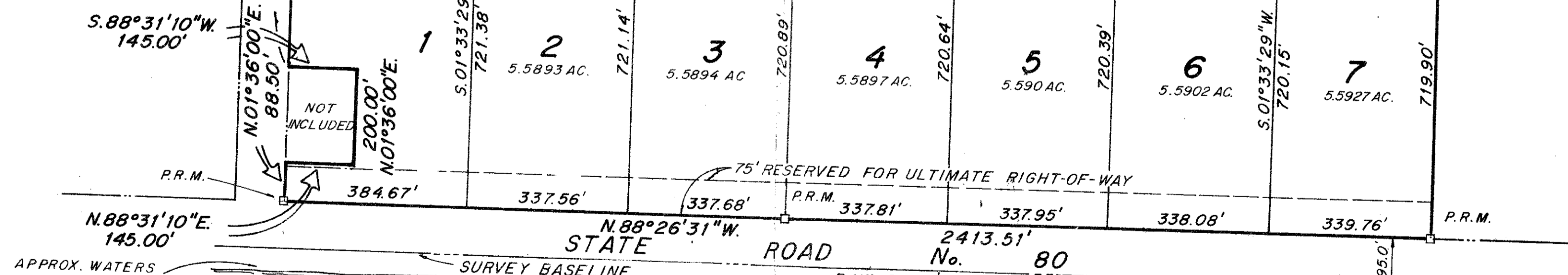
NOT
PLATTED



NOT
PLATTED



ur0224.igr
ENTRADA ACRES PG 2 OF 2



NOTE: SOUTH R/W S.R. No. 80
VARIES (NORTH SHORE
LINE W.P.B. CANAL)

THIS INSTRUMENT WAS PREPARED BY
GEORGE C. PANOS IN THE OFFICES OF
FLORIDA SURVEYING AND MAPPING
941 NORTH MILITARY TRAIL
WEST PALM BEACH, FLORIDA 33406

| | | | |
|-----------------------------------|---------------|----|------|
| FLORIDA SURVEYING & MAPPING, INC. | | | |
| REGISTERED LAND SURVEYORS | | | |
| WEST PALM BEACH, FLORIDA 33401 | | | |
| SCALE: 1" = 200' | REVISED | BY | DATE |
| DATE: DEC, 1977 | | | |
| DR: ELO | | | |
| Field Book | | | |
| TITLE | ENTRADA ACRES | | |
| | NO. 177-171 | | |